

ESP.

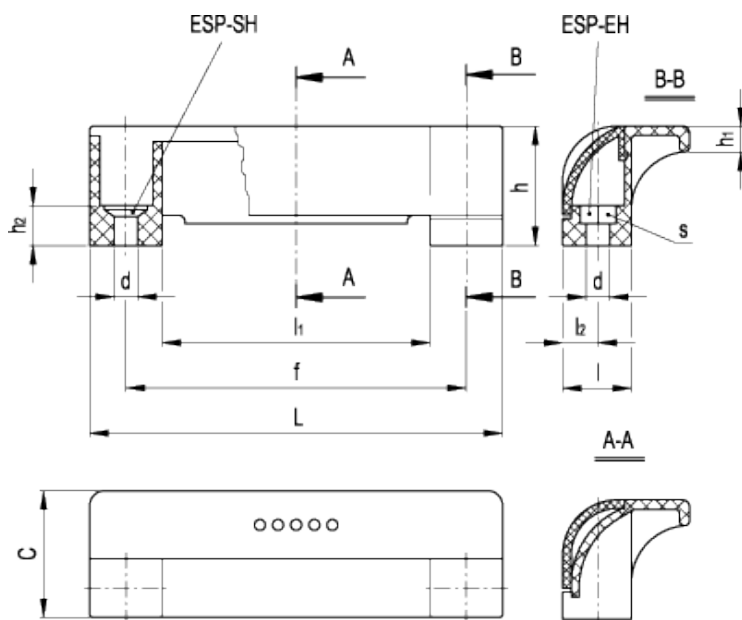
Guard safety handles



ELESA Original design



ERGOSTYLE®



technical informations

Material

Glass-fibre reinforced polyamide based (PA) technopolymer. Resistant to solvents, oils, greases and other chemical agents.

Colour

Grey-black, matte finish.

Cover

Technopolymer in Ergostyle colours, glossy finish, supplied not assembled, snap-in assembly, removable by a screwdriver. Available also as accessory sold separately (see caps table).

Assembly

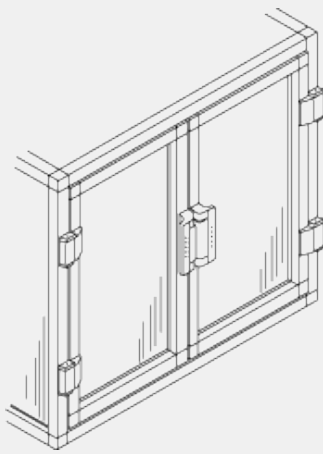
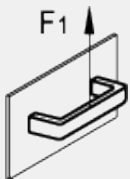
- Execution EH: through holes for cylindrical-head screws with hexagon socket, hexagonal-head screws or standard lock nuts.
- Execution SH: through holes for countersunk head screws.

Features and applications

ESP. handles have been especially designed to fit machines guards or automation systems with double-leaf door. The special closed design of the handle represents a safety element for the operator's fingers. Moreover, the coloured cover improves the visibility of the handle and offers the possibility of product customisation.

Technical data

Tensile stress: F1 value reported in the table is the result of breaking tests carried out with an appropriate dynamometric equipment under the test conditions shown in the figure with ambient temperature.



C1 RAL 7021 **C2 RAL 2004** **C3 RAL 7035** **C4 RAL 1021** **C5 RAL 5024** **C6 RAL 3000**

Standard Elements		Main dimensions								Mounting holes			F ₁	Weight
Code	Description	L	f	h	C	I	I ₁	I ₂	h ₁	d	h ₂	s	[N]	g
265111-*	ESP.110-EH-*	114	93.5±0.5	33	35	19	74	9.5	7	6.5	11	10	90	33
265151-*	ESP.110-SH-*	114	93.5±0.5	33	35	19	74	9.5	7	6.5	11	-	90	33

* Complete the code and the description of the standard item needed by adding the index of the colour of the cover (C1,.....,C6) ex: 265111-C2 ESP.110-EH-C2

Code	Description
29864-*	ECO.S4-*

* Complete the code and the description by adding the index of the colour (C1,.....,C6).

This product had the following design awards:





ELESA and GANTER models all rights reserved in accordance with the law. Always mention the source when reproducing our drawings.

STANDARD MACHINE ELEMENTS WORLDWIDE